

Pneumatically Operated Valve DN 4 - 15 mm (1/4" - 1/2")



217.30 Cf. 4



217.25 Cf. 5 & 6

This valve is available in two different designs.

The type 217.30 is available in the control function fail safe close and performs at a higher working pressure for standard application. Advantages of the type 217.25 are a very high cycle life and a smaller overall dimensional height. Type 217.25 is available in control functions fail safe open and double acting for standard working pressures.

Features

- **High cycle stainless steel piston actuator**
Type 217.30 with double piston
- Compact design, the outside diameter of the actuator is the same size as the bonnet flange connecting diaphragm and body
- Advantages in multiport bodies and manifold valve assemblies
- Low control air volume, high switching speed
- High repeatability
- Control air connection on the top, away from the process product line
- Direction of control air connection is mountable in 90° rotations
- CDSA sealing concept, see page 32
- Flexible diaphragm suspension
- Clean and polished exterior design ideal for sterile wash downs

Optional

- Available with a wide range of control equipment and accessories see page 132 to 139 for this options
- Autoclavable

Technical Data

- Control function (Cf.): Pneumatically operated
- 217.30: Fail safe close (NC): Cf. 1 & 4
- 217.25: Fail safe open (NO): Cf. 2 & 5
Double acting (DA): Cf. 3 & 6
- At control function NO/DA higher control pressure than required may affect the lifetime of the working diaphragm.
- Direction
- Control connection: At Cf. 4, 5 & 6 in flow direction, standard
At Cf. 1, 2 & 3, 90° to flow direction
- Max. working pressure: Unidirectional (delta p = 100%)
- 217.30: Cf: Fail safe close
EPDM diaphragm 8 bar (115 psi)
PTFE diaphragm 7 bar (100 psi)
- 217.25: Cf: Fail safe open and double acting
EPDM diaphragm 8 bar (115 psi)
PTFE diaphragm 7 bar (100 psi)

Higher working pressure may be achieved with different actuator. Please consult a SED factory representative for working pressure above the indicated maximum.

Max. working temperature: 160°C (320°F) dependent on application

- Control pressure:
- 217.30: Cf. 1 & 4 4 - 7 bar (60 - 100 psi)
Cf. 1 & 4 5,5 - 7 bar (80 - 100 psi)
- 217.25: Cf. 2, 3, 5 & 6 5,5 - 7 bar (80 - 100 psi)

- Diaphragm material: EPDM or PTFE
- Valve body material: Forged 1.4435/ 316 L ASME/BPE
Investment cast 1.4435/ 316 L
Other alloys

- End connection: Butt weld ends see fold out page 21
Clamps and flanges see page 22 to 24
Special ends

- Actuators suitable for: Two-Way bodies, Welded configurations, T-bodies, Multiport bodies, Tank bottom bodies

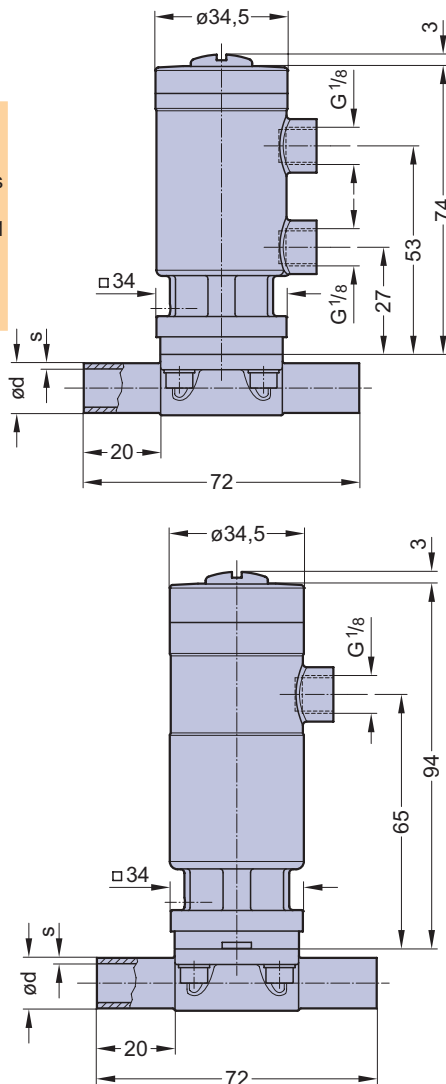
Flow rate: Kv in m³/h (Cv in GPM) see page 9

Diaphragm size: MA 8

- Weight: 217.30: ca. 0,45 kg
217.25: ca. 0,44 kg

Technical data also valid for multiport valve.

Type	MA	Filling volume (NL)	
		NC	NO/DA
217.25	8		0,013
217.30	8	0,013	



Butt weld ends
MA 8
Fold out page 21

Valve type overview see page 26 and 27.
Ordering key see page 66 to 68.